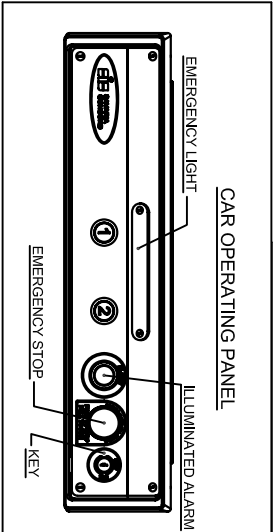
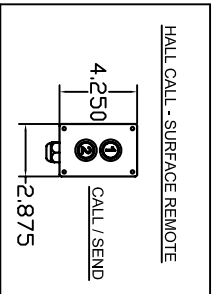
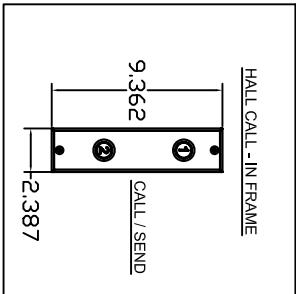
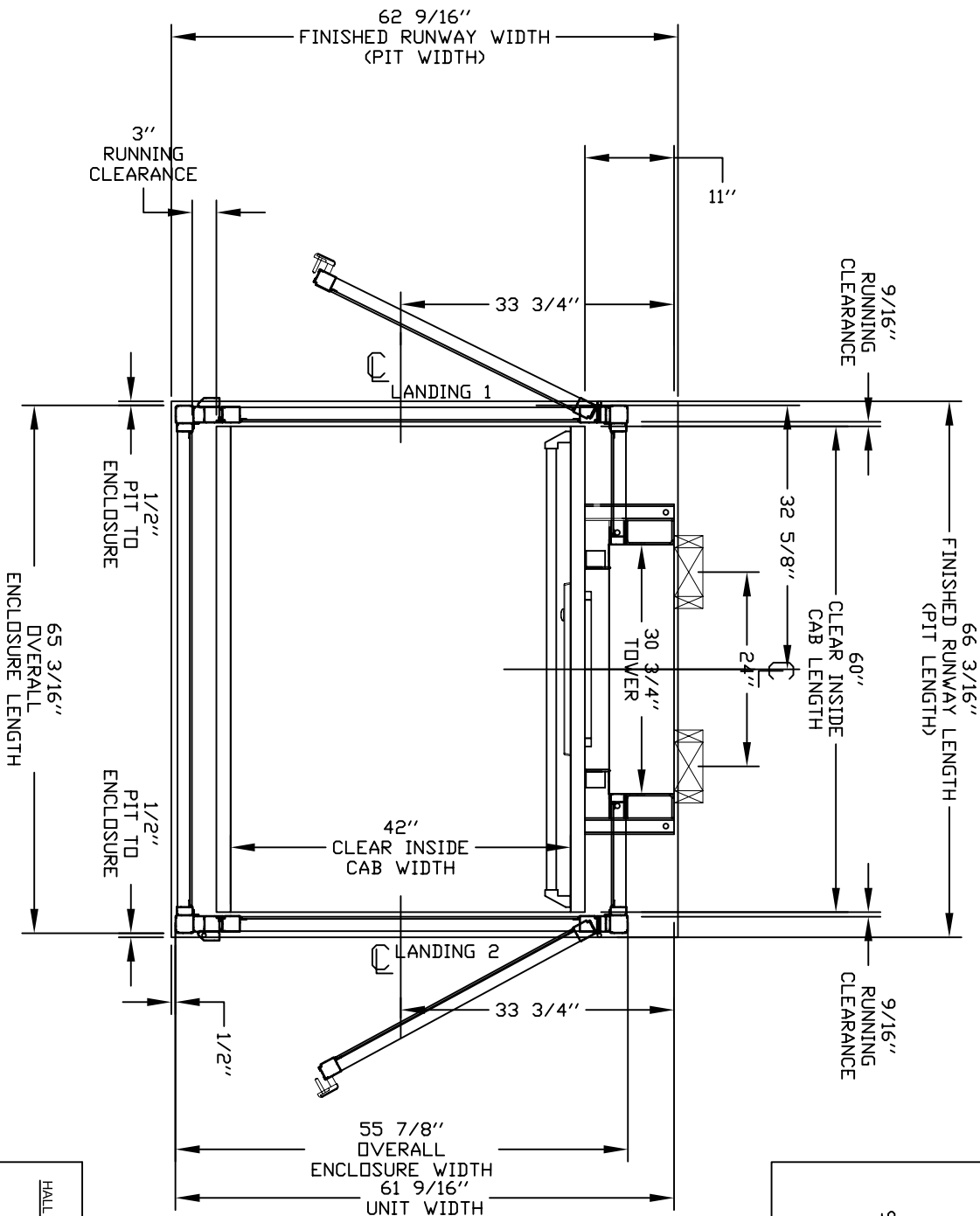
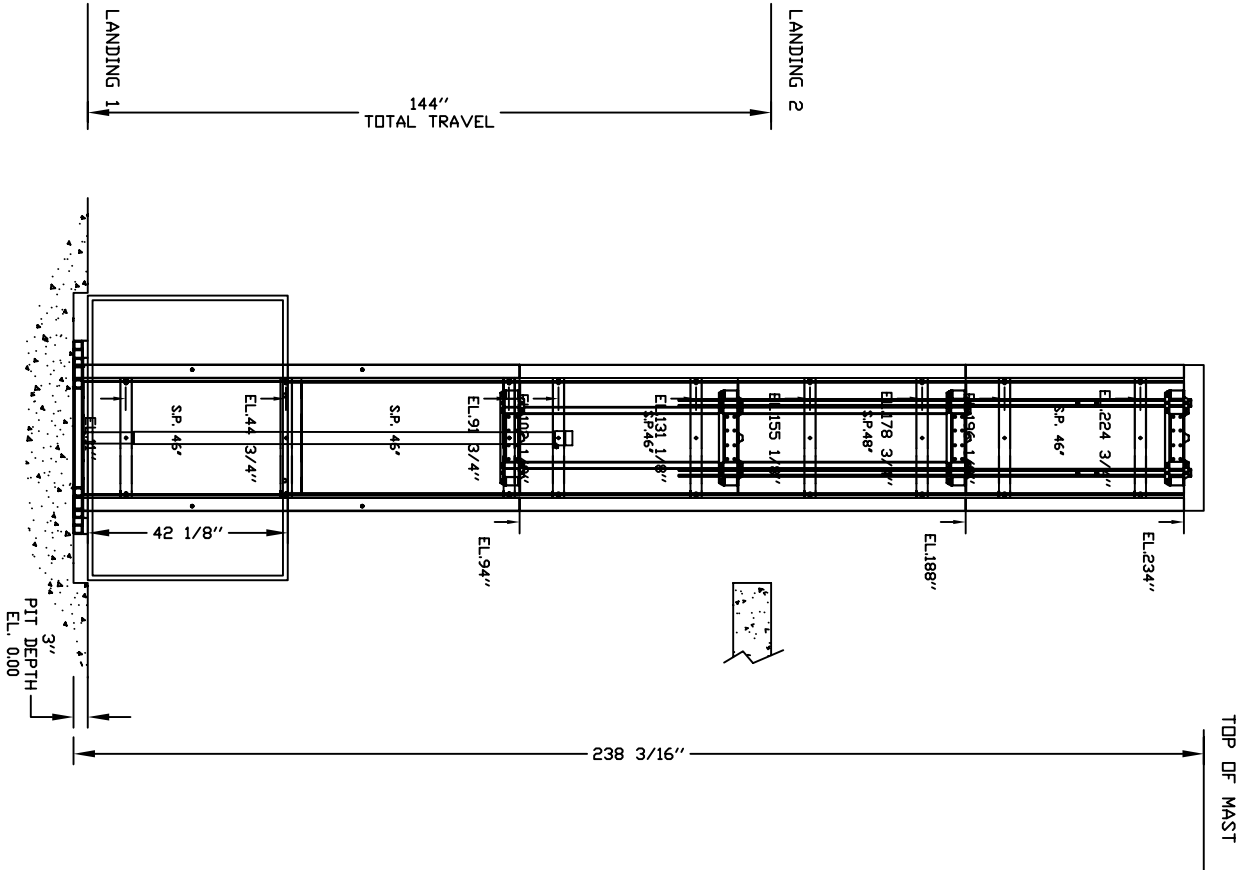


TYPICAL PLAN



PRELIMINARY DRAWING ONLY
DRAWING APPROVAL:

THIS DRAWING REFLECTS OUR INTERPRETATION OF THE INFORMATION PROVIDED BY THE DEALER ON THE ORDER FORM. THIS INFORMATION IS THE DEALER'S RESPONSIBILITY, AND IS THE BASIS FROM WHICH THIS LIFT IS DESIGNED AND MANUFACTURED. PLEASE INDICATE THE REQUESTED ACTION BY CHECKING ONE OF THE FOLLOWING BOXES AND SIGNING BELOW TO AUTHORIZE COMPLETION OF THIS ORDER.

☐ APPROVED WITH NO EXCEPTIONS
MANUFACTURE PRODUCT AS PER DRAWING

☐ APPROVED WITH EXCEPTIONS, NO REAPPROVAL
REQUIRED
MAKE CHANGES AS NOTED, NO REAPPROVAL DRAWING REQUIRED

☐ CHANGE AS NOTED, REAPPROVAL REQUIRED
MAKE CHANGES AS NOTED, SEND CORRECTED DRAWING FOR REAPPROVAL BEFORE MANUFACTURE

OFFICE USE ONLY:	
CONFIGURATION VERSION STAMP:	0.0
MODULE VERSION STAMP:	15743

Port No.	Variant No.
4	8571

Nationwide Lifts
www.elevators.com

GENERAL ARRANGEMENT
ENCLOSED VERTICAL WHEELCHAIR PLATFORM LIFT

CUSTOMER:	NA TIONWIDE LIFTS
PROJECT:	APEX COMPLETE - 42 WIDE X 60 DEEP
ADDRESS:	DOORS OPPOSITE SIDES, RAILS ON LEFT
	888-323-8755 INFO@ELEVATORS.COM

DATE:	06/16/15
REVISION DATE:	06/16/15
COMPLETED BY:	ANDREW HALL
JOB No.	P000001
SHEET No.	1 OF 4

savarida™



PROVISIONS BY OTHERS

GENERAL

HOISTWAY – THE HOISTWAY MUST BE DESIGNED AND BUILT IN ACCORDANCE WITH ‘SAFETY STANDARD FOR PLATFORM LIFTS AND STAIRWAY CHAIRLIFTS’ OR ‘SAFETY CODE FOR ELEVATORS AND ESCALATORS’ AND ALL STATE AND LOCAL CODES.

PLUMB RUNWAY– DUE TO CLOSE RUNNING CLEARANCES OWNER/ AGENT MUST ENSURE THAT HOISTWAY AND PIT (WHERE PROVIDED) ARE LEVEL, PLUMB (</+ 1/8” (< 3 mm)) AND SQUARE AND ARE IN ACCORDANCE WITH THE DIMENSIONS ON THESE DRAWINGS.

MINIMUM OVERHEAD CLEARANCE– OWNER/AGENT MUST ENSURE MINIMUM OVERHEAD CLEARANCE IS IN COMPLIANCE WITH CODES.

CONSTRUCTION SITE– OWNER/AGENT TO PROVIDE ALL MASONRY, CARPENTRY AND DRYWALL WORK AS REQUIRED AND SHALL PATCH AND MAKE GOOD (INCLUDING FINISH PAINTING) ALL AREAS WHERE WALLS/FLOORS MAY REQUIRE TO BE CUT, DRILLED OR ALTERED IN ANY WAY TO PERMIT THE PROPER INSTALLATION OF THE LIFT.

DIMENSIONS– CONTRACTOR/CUSTOMER TO VERIFY ALL DIMENSIONS AND REPORT ANY DISCREPANCIES TO OUR OFFICE IMMEDIATELY.

STRUCTURAL

FLOOR/SUPPORT WALL LOADS– CONTRACTOR TO ASSURE THAT BUILDING AND SHAFT WILL SAFELY SUPPORT ALL LOADS IMPOSED BY THE LIFT EQUIPMENT. REFER TO THE LOAD DIAGRAM ON THIS DRAWING.

MAST TO BE SECURELY FASTENED– WHERE REQUIRED THE MAST MUST BE SECURELY FASTENED TO THE STRUCTURAL SUPPORT WALL. REFER TO WALL / FLOOR SUPPORT LOAD DIAGRAM AND WALL LAG DIMENSIONS ON THIS DRAWING.

WHERE DOORS ARE REQUIRED– SUITABLE LINTELS MUST BE PROVIDED BY OWNER/AGENT. DOOR FRAMES ARE NOT DESIGNED TO SUPPORT OVERHEAD WALL LOADS.

ELECTRICAL

GENERAL– ELECTRICAL EQUIPMENT AND WIRING TO COMPLY WITH SECTION 38 OF CSA C22.1 (CANADA) OR SECTION 620 OF NEC ANSI/NFPA 70 (USA).

POWER SUPPLY– 120VAC, 20A, 60HZ, 1PH CIRCUIT THROUGH A FUSE DISCONNECT WITH AUXILIARY CONTACT ON MAIN POWER SUPPLY. PROVIDE TWO 18 AWG CONDUCTORS BETWEEN CONTACT AND CONTROLLER.

LIGHTING–LIGHTING OF 100 LX MIN. AT PLATFORM AND LANDINGS. LIGHTING WITH SWITCH AND ELECTRICAL GFCI OUTLET IN HOISTWAY PIT.

ENTRANCES

UPPER LANDING GATES– WHERE REQUIRED, SMOOTH SOLID BARRIERS ARE TO BE SUPPLIED AND INSTALLED ON BOTH SIDES OF ENTRANCE AT UPPER LEVEL AND MUST BE A MINIMUM OF 42” (1067 mm) HIGH. ENTRANCE ASSEMBLY MUST BE IN PLACE PRIOR TO THIS PROVISION.

FASCIA PANEL BELOW UPPER LEVEL ENTRANCE– WHERE REQUIRED, FASCIA PANEL MUST BE FASTENED TO A SOLID WALL AND BE PERPENDICULAR TO THE FLOOR AND WALLS. HOISTWAY FASCIA IS NOT SELF-SUPPORTING FOR LONG, CONTINUOUS RUNS VOID OF ENTRANCES. ADEQUATE SUPPORT FOR THE FASCIA MUST BE PROVIDED.

ENTRANCE ASSEMBLIES– ENTRANCE ASSEMBLIES MUST BE ADJUSTED TO ALIGN WITH PLATFORM AND INTERLOCK EQUIPMENT.

OTHERS TO ALLOW AN ADEQUATE ROUGH OPENING.
RETURN WALLS– RETURN WALLS AT ENTRANCES MUST BE BUILT-IN BY OTHERS AFTER ENTRANCE ASSEMBLIES ARE IN PLACE. ENTRANCE ASSEMBLY MUST BE SECURELY FASTENED TO WALLS.

GENERAL

CLASSIFICATION: Enclosed Vertical Wheelchair Platform Lift
APPLIED CODE: ASME A18.1-2008 Section 2 Pub
SPECIAL NOTE:

MODEL: V-1504 Enclosure
CAPACITY: 750 lbs (<341 kg)
SPEED: 20 fpm (0.102 m/s)
TRAVEL: 144” (<3658 mm)
PIT DEPTH: 3” (<76 mm)
PLATFORM SIZE: 42” X 60” (1067 mm X 1524 mm)
POWER SUPPLY: 120V,20A,60Hz,SINGLE PHASE
BATTERY BACK UP: down direction only

JACK UNIT

STROKE: 84” (<2134 mm)
PLUNGER O/D: 2.0” (<51 mm)
CYL. O/D: 2.625” (<67 mm)
CYL. I/D: 2.25” (<57 mm)

CONTROLLER

MODEL: V-1504
TYPE: CPFS
ETL #: 94307
CONTROL VOLTS: 24VDC
CONTROL AMPS: 1 A
H.P.: 1.5 / 1.0 / 3.0
AMPS: 19 / 15
MFR.: SAVARIA

POWER UNIT

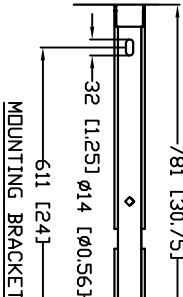
MOTOR: 3.0 HP, 120 VAC
FLOW: 1.15 Gal/min (4.35L/min)

HYDRAULIC DATA

OIL TYPE: UNIVIS 32 INDOOR DEXRON ATF OUTDOOR
GALLONS REQ'D: 1.5 Gal (<5.68 L)
MAXIMUM WORKING PRESSURE: 2000 psi (137 MPa)
RELIEF PRESSURE: WPx125% MAX.
MAXIMUM RELIEF PRESSURE: 2000 psi (13.7 MPa)
HYDRAULIC HOSE: 1/4” (<6.4 mm) ID
BURST: 20000 psi (137.9 MPa)
FITTINGS: 1/4” (<6.4 mm) NPT MALE

SUSPENSION CHAIN

2X #50 ROLLER CHAIN
BREAKING STRENGTH: 7171 lbs (31.9 kN) each
SAFETY BRAKE: TYPE ‘A’



MOUNTING BRACKET

DOORS / GATES / CALL STATIONS

	LANDING 1	LANDING 2	LANDING 3	LANDING 4
DOOR TYPE	Enclosure 80” Door	Enclosure 80” Door		
DOOR SWING	a	c		
DOOR INSERT	rh	lh		
LOCK TYPE	Clear Plexiglass	Clear Plexiglass		
AUTO DOOR OPENER	WR500 Lock (24V)	WR500 Lock (24V)		
CUSTOM DOOR WIDTH	NO	NO		
CUSTOM DOOR HEIGHT				
IN FRAME CALL STN.				
CALL STN. TYPE	no	yes		
CALL STN. KEVED	Call/Send Buttons	Call/Send Buttons		
CALL STN. STOP BUTTON	Not Required	Not Required		
CALL STN. MOUNTING	Surface Mounted Remote	Flush Mounted In Frame		
ISOLATED PRODDOR KIT	No	No		

OPTIONS PROVIDED

EMERGENCY PENDENT PLUG IN MANUAL LOWERING BOX

WINGS:	no	RAMP:	No Ramp Required
TOUCH UP PAINT:	1 cans(s)	EXTRA KEYS:	0
BUILDING:	Public Building	WALL FASTENERS:	none
LIGHT CURTAIN:	no	UNDERPAN SENSOR:	no
PHONE OR PHONE PLUG:	No Phone,Plug Incl	COLOR:	Standard Color - Almond Beige

LOCATION: IN DOOR

OFFICE USE ONLY:	Port No.	Nationwide Lifts
CONFIGURATION VERSION STAMP:		www.elevators.com
MODULE VERSION STAMP:		

CUSTOMER: NATIONWIDE LIFTS

PROJECT: APEX COMPLETE - 42 WIDE X 60 DEEP

ADDRESS: DOORS OPPOSITE SIDES, RAILS ON LEFT

888-323-8755

INFO@ELEVATORS.COM

ENCLOSED VERTICAL WHEELCHAIR PLATFORM LIFT

DATE: 06/16/15

REVISION DATE: 06/16/15

COMPLETED BY: ANDREW LINTLIS

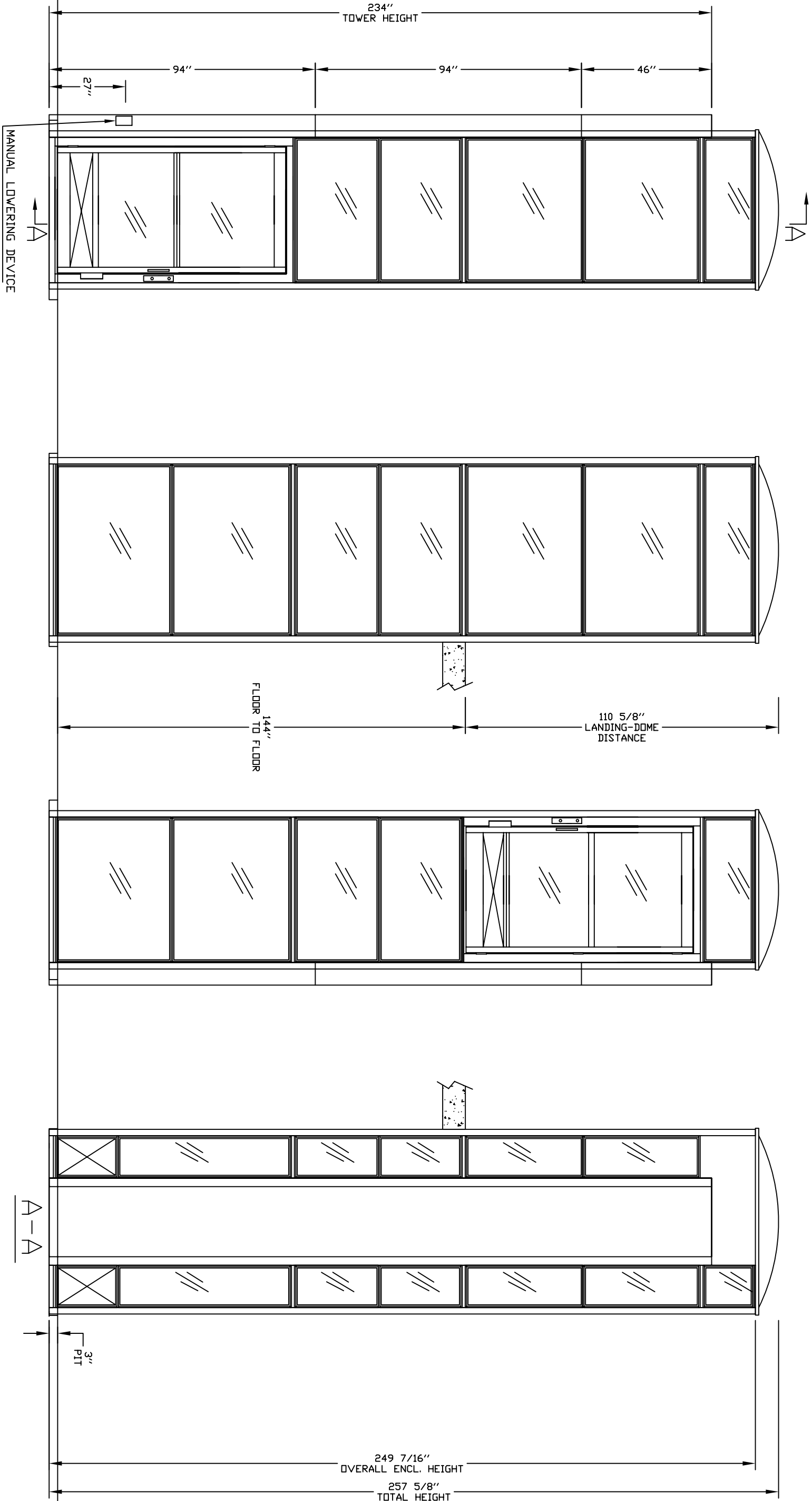
Job No. P0000002 OF 4

SAVARIA

20

SPECIFICATIONS

PANEL DRAWING



INSERT Door and Gate
STYLE: SHEET METAL



INSERT Enclosure
STYLE: SHEET METAL



ELEVATION VIEWS

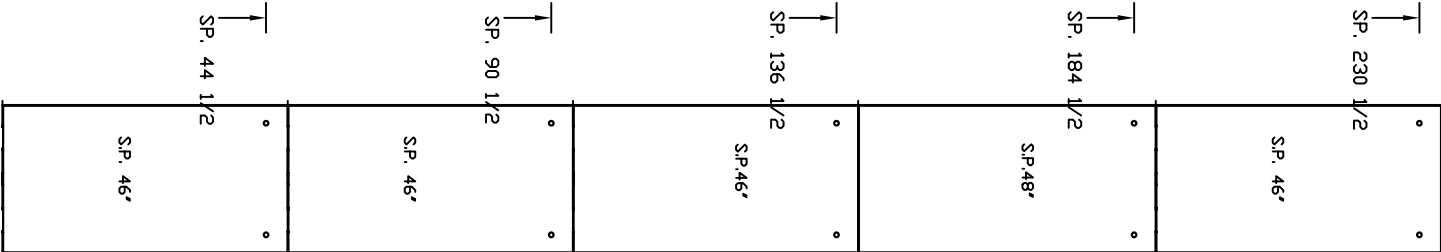
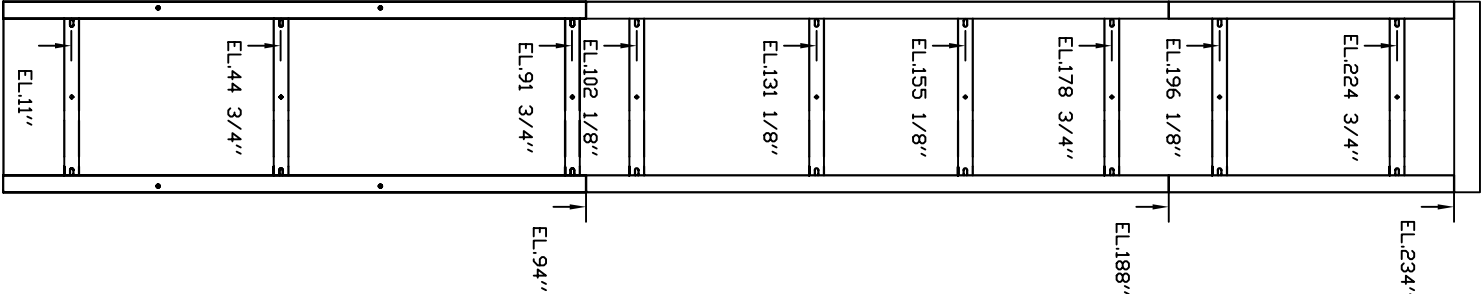
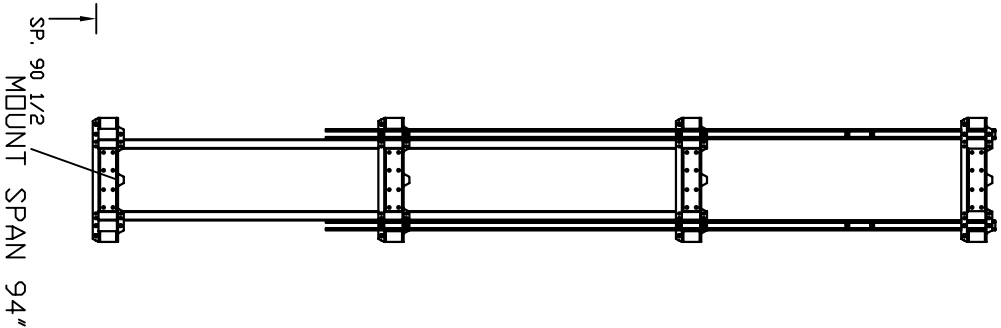
ENCLOSED VERTICAL WHEELCHAIR PLATFORM LIFT

CUSTOMER: NATIONWIDE LIFTS
PROJECT: APEX COMPLETE - 42 WIDE X 60 DEEP
ADDRESS: DOORS OPPOSITE SIDES, RAILS ON LEFT
888-323-8755 INFO@ELEVATORS.COM

OFFICE USE ONLY:	
CONFIGURATION VERSION STAMP:	0.0
MODULE VERSION STAMP:	13/7/13

DATE: 06/16/15
REVISION DATE: 06/16/15
COMPLETED BY: ANDREW LEMLEY

Port No.	48571	Nationwide Lifts www.elevators.com
Variant No.	48571	
Job No.	P000000	SHEET No. 3 OF 4
savaria		20



EL: MOUNTING BRACKET POSITION

SP: SERVICE PANEL

OFFICE USE ONLY:
CONFIGURATION VERSION STAMP: 0.0
MODULE VERSION STAMP: B37A13

DATE:

06/16/15

REASON DATE:

06/16/15

COMPLETED BY:

ANDREW L. LIFTS

Port No.



Variant No. 48571



JOB No.

P000000

SHEET No.

4 OF 4

ELEVATION VIEWS

ENCLOSED VERTICAL WHEELCHAIR PLATFORM LIFT

CUSTOMER: NATIONWIDE LIFTS

PROJECT:

APEX COMPLETE - 42 WIDE X 60 DEEP

ADDRESS:

DOORS OPPOSITE SIDES, RAILS ON LEFT

888-323-8755

INFO@ELEVATORS.COM